

R-F-M

THE MIDLANDS MART

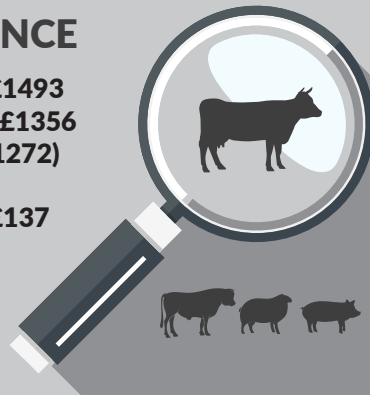
— RUGBYFARMERSMART.COM —

The Charolais Pavilion, Avenue M, Stoneleigh Park,
Kenilworth, Warwickshire CV8 2RG
02476 697731 | www.rugbyfarmersmart.com | 43/139/8013
Office hours: Monday to Friday - 9.00am - 5.00pm
Opening Time: Gates open at 5.30am until further notice

MARKET REPORTS FOR MONDAY 4TH JANUARY 2021

MARKET AT A GLANCE

Prime Steers to 228p/kg & £1493
Prime Heifers to 226p/kg & £1356
Prime Hogg SQQ 245p/kg (1272)
Avg £104
Prime Hogs to 286p/kg & £137
Ewes to £139 (542 Avg £86)
Store Lambs to £95 (295)



Thursday 21st January Proposed Sale of TB Restricted Cattle

Catalogues & Entry Forms available by post, email or on the website
www.rugbyfarmersmart.com | admin@rugbyfarmersmart.com



CATTLE: 18 FORWARD

The disappointing entry of cattle in terms of numbers was particularly disappointing in that we had canvassed vendors hard to consign quality prime Cattle to meet the envisaged demand and that those entries did not materialise.

The trade was even better than predicted for the quality forward. Trade was on fire for prime steers and heifers and it is again reiterated that we need your cattle in greater numbers on a weekly basis.

Barren Cows (1).

A single barren cow sold to 0.99ppk and £758 from RF Leach, Carpenters.

Many more cows are needed on a weekly basis especially well finished farm assured cows.

Prime Cattle (17)

More prime cattle were hoped for following the fast trade predicted. The majority forward were nicely finished steers and heifers and were consistently a fantastic trade. The current solid demand for this type of prime beef is set to be maintained and more finished cattle are needed with a new buyer at ringside next week.

Steers:-

A quality run of finished bullocks sold to a top of 228ppk (£1494) from F Hodgkin, Avon Valley who also sold to 219ppk (£1467).

GR Fontaine also sold at 219ppk (£1260).

RW Cross was consistent in selling steers at 214ppk and 213ppk.

Heifers:-

Top price per head and per kilo was a quality heifer at 226ppk (£1356) from GR Fontaine who also sold at 220ppk (£1265). RJ Heckford was next at £2.18ppk (£1319). AE+AM Tacy was also consistent in selling heifers at 211ppk, £208ppk and 202ppk.

The prime cattle section has seen a very fast trade every week for the last month. In the new year we hope to build on the improvements in trade with comparatively increased numbers. More abattoirs are represented but a shortage in cattle forward will test their resolve to keep supporting us. We need your cattle and we need them now.

Auctioneer: John Eirian Davies

NEXT CALF SALE
MONDAY 11TH JANUARY 11AM

STEERS & BULLS

| Top prices per Head | | | | FA |
|---------------------|-------|-------|----------------------|----|
| Limousin x | 655kg | £1493 | F Hodgkin | Y |
| Limousin x | 670kg | £1467 | F Hodgkin | Y |
| Limousin x | 590kg | £1263 | R W Cross & Partners | Y |
| Limousin x | 575kg | £1259 | GR Fontaine & Son | Y |
| Limousin x | 565kg | £1203 | R W Cross & Partners | Y |

| Top prices per Kilo | | | | |
|---------------------|-------|--------|----------------------|---|
| Limousin x | 655kg | 228ppk | F Hodgkin | Y |
| Limousin x | 670kg | 219ppk | F Hodgkin | Y |
| Limousin x | 575kg | 219ppk | GR Fontaine | Y |
| Limousin x | 590kg | 214ppk | R W Cross & Partners | Y |
| Limousin x | 565kg | 213ppk | R W Cross & Partners | Y |

HEIFERS

| Top prices per head | | | | FA |
|---------------------|-------|--------|-------------------|----|
| Limousin | 600kg | £1356 | GR Fontaine & Son | Y |
| Limousin x | 605kg | £1319 | R J Heckford | Y |
| Limousin x | 600kg | £1266 | AE & AM Tacy | Y |
| Simmental | 575kg | £1265 | GR Fontaine & Son | Y |
| South Devon | 675kg | £1175 | R J Heckford | Y |
| Top prices per kilo | | | | |
| Limousin | 600kg | 226ppk | GR Fontaine & Son | Y |
| Simmental | 575kg | 220ppk | GR Fontaine & Son | Y |
| Limousin x | 605kg | 218ppk | R J Heckford | Y |
| Limousin x | 600kg | 211ppk | AE & AM Tacy | Y |
| Limousin x | 530kg | 208ppk | AE & AM Tacy | Y |

SHEEP: 2109 FORWARD PRIME HOGGS: 1272 FORWARD SQQ 245P/KG



The first outing of the Hogg season, and the numbers across the Country very short. Trade fantastic and in truth for a below average yarding in quality, notwithstanding this an SQQ of 245p/kg including Swaledales, Rough Fells and Badger Faces. Trade buoyed by the need for processors to get numbers back into the system, but interestingly today many of the Exporters to countries North and East of France, unable to take numbers as they await paperwork to Export. Hopefully this backlog will clear itself in the coming days as the officials get their house in order. In truth today lambs a swift trade throughout returning a deadweight equivalent of 520p/kg with the only sector proportionately steadier on the week the best end lambs as a result of the difficult paperwork issues into Holland and Belgium. Lightweights remaining an unprecedented trade. Top today Benjamin Nichols with fed lambs to 306p/kg at 27kg whilst last lambs out the shed for DS & LA Wadland saw 294p/kg at 31kg. Pete Batchelor really producing the quality to see 38.5kg take 286p/kg with 43kg to 279p/kg and Roger Woodward 40kg Texels to 278p/kg. In the heavies a top today of 273p/kg at 49kg for Pete Batchelor with pure quality seeing his 47kg to 272p/kg and David Wadland 46kg to 266p/kg. Meat from David rewarded at 257p/kg and 256p/kg at 48 and 48.5kg for Beltex. Today's all in gross avg that includes huge numbers of lightweight lambs and Swaledales returns a very good £104 all in average. Export weights totting up to £120 at 43kg from P Batchelor with G R Fountaine & Son close behind at £117 for 43kg. RF & JA Nichols saw 45kg to £117. Overall today heavies very much in vogue as numbers dry, to see a top of £137 at 63kg, £134 at 49kg and £131 at 54kg from Pete Batchelor with FJ Tombs & Son 58kg to £130 equal with a 62kg from Robert and Jenny Nichols. As ever, the joy of the market and the lamb trade is its reaction to actual economic forces on Supply or Demand sides. Unlike the premeditated Pork or Beef Sectors.!!!

Auctioneer: Tom Wrench

COVID 19

DROP AND GO POLICY IS BACK IN PLACE FOR VENDORS

IF BUYING PLEASE REGISTER YOUR ATTENDANCE AT THE MARKET OFFICE,

WEAR A FACE COVERING AND SOCIAL DISTANCE AT ALL TIMES

THANK YOU

PRIME HOGGS : UNDER 45.5kg SQQ 245p/kg

| Per Kilo | | | |
|--------------|---------|---------|--------------------|
| Charollais x | 26.50kg | 306ppk | B Nichols |
| Beltex x | 31.00kg | 294ppk | DS & LE Wadland |
| Beltex x | 38.50kg | 286ppk | P Batchelor |
| Beltex x | 43.00kg | 279ppk | P Batchelor |
| Texel x | 40.00kg | 278ppk | R Woodward |
| Per HEAD | | | |
| Beltex x | 43.00kg | £120.00 | P Batchelor |
| Charollais x | 43.00kg | £117.00 | GR Fountaine & Son |
| Texel x | 45.00kg | £117.00 | RF & J Nichols |
| Beltex x | 42.50kg | £115.00 | P Batchelor |
| Texel x | 44.00kg | £115.00 | PE & EH King |

PRIME HOGGS : OVER 45.5kg

| Per Kilo | | | |
|--------------|---------|---------|-----------------|
| Beltex x | 49.00kg | 273ppk | P Batchelor |
| Beltex x | 47.00kg | 272ppk | P Batchelor |
| Texel x | 46.00kg | 266ppk | DS & LE Wadland |
| Texel x | 48.00kg | 257ppk | DS & LE Wadland |
| Texel x | 48.50kg | 256ppk | DS & LE Wadland |
| Per HEAD | | | |
| Beltex x | 63.00kg | £131.00 | P Batchelor |
| Beltex x | 49.00kg | £126.00 | P Batchelor |
| Beltex x | 54.00kg | £125.00 | P Batchelor |
| Charollais x | 58.00kg | £123.50 | FJ Tombs & Son |
| Texel x | 62.00kg | £122.50 | R F & J Nichols |

**PLEASE COULD ALL VENDORS BOOK IN STOCK,
EITHER BY A QUICK CALL, TEXT OR EMAIL THANK YOU!**

Office: 02476697731 | Email: admin@rugbyfarmersmart.com | Tom: 07774723758

CULL EWES: 542 FORWARD



An Average of £86 and simply flat out trade throughout for all but small boning Ewes which would be back on the week as Hill ewes flood the Market in the North to service this area of consumption. Heavy Ewes a smart trade. No real showstoppers today but those with shape rewarded to see a nice ewe at £139 for Beltex from Matt and Clare Morris who also sold to £138 and £132. WH & R Weston topped the Rams at £129 for Charolais with equal breed ewes to £120 from L C Threadgold. Texel and Texel x Ewes £110 plus with Suffolks to a top of £115 from R J Wright, with Messrs Friswell £111. Suffolks generally £106 plus if weighted. Mules a flyer and getting to £102.50 from R D Green & Son with £100.50 from Messrs Emery. Heavy Mules regularly in the mid £90's. Trade likely to plateau as Scan results come back.

Auctioneer: Tom Wrench

EWES

| | | | | | |
|--------------|------|-----------------------|--------------|---------|--------------------|
| Beltex x | £139 | M & C Morris | Texel x | £120 | T B Checkley & Son |
| Beltex x | £138 | M & C Morris | Charollais x | £119 | W H & R Weston |
| Beltex x | £132 | M & C Morris | Texel x | £118 | TB Checkley & Son |
| Charollais x | £129 | W H & R Weston | X Bred | £116.50 | S A & E Friswell |
| Charollais x | £120 | L C Threaadgold & Son | Texel x | £115 | S & H E Ronch |

STORE LAMBS: 297 FORWARD

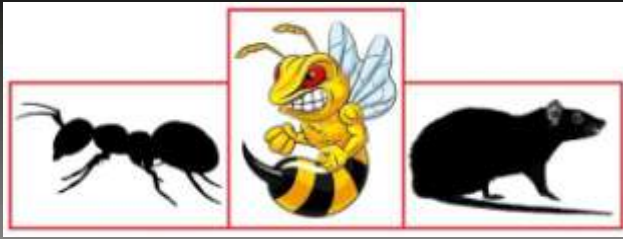


A much better entry of well bred lambs sold to a larger buying contingent and blistering trade. There were mainly well bred, longer keep lambs forward and these were dearest on the day pound for pound. A large consignment from G Bell, Duck House (Yorkshire) being healthy and well bred lambs looked very well sold.

It is reiterated that there will be an influx of buyers in the new year to place lambs on fields of root crops currently untouched. We need larger entries of short and long keep lambs going forward. Suffolk lambs sold to £95 from M Clarke, Rookery. Texels to £90 from RP Hutchins, Hill. Charolais to £88.50 and £87 from J + RJ Coombes, Forest and £88 from M Baylis, Rosebury. Other leading prices were £87 from Wolverton Farm Estate. £87 from Bailey and Moore, Meadow and £83 from MJ Woodward, Glenfield.

Overall Average £72.95 per head.

Auctioneer: John Eirian Davies



RDB Pest Control

Reliable | Trustworthy | Fast | Effective
Competitive Prices

Ryan Brunt

07922 091 459

www.rdbpestcontrol.co.uk

Why You Should Choose Us

- ✓ Cater for Red Tractor and Farm Assurance Schemes
- ✓ Wide ranging experience on Farms with existing agricultural customers
- ✓ Member of Warwickshire Young Farmers
- ✓ Fully qualified - Level 2 RSPH in Pest Control
- ✓ Trustworthy and security vetted
- ✓ Prompt, reliable fast response

A selection of sites where I have experience:

Police Sites • Local Airport • Farms • Warehouses • Offices
• Industrial Estates • Food Premises • Private Houses
Country Estates • Building Sites • Local Councils • Schools •
Day Nurseries • Care Homes

We are very sorry that due to the current COVID restrictions we are unable to hold our usual carol singing, mulled wine and mince pies event before the poultry sale on 22nd. December.

Can I take this opportunity on behalf of all the Warwickshire volunteers with The Farming Community to wish you all a blessed, happy and safe Christmas, and a healthy and prosperous 2021.

It's been a particularly difficult time for many in the farming community, please do phone FCN 03000 111 999 for confidential help if needed.

As market chaplain I am also available if anyone would like a confidential chat any time.

Hoping for a much better 2021!

Revd. Barbara Clutton – Market chaplain.
01788 810372
07808 137550



S.J. Darker Contracting Ltd
Civil Engineering, Ground Works &
Fencing Contractors

25 Lower Street, Hillmorton
Rugby, Warwickshire CV21 4NP
Tel: 07944 295 789
Email: simondarker99@yahoo.com

WANTED - MUCK BAGS

If you have any unwanted feed bags
please call 07759454195

COUNSELLING FOR FARMERS TALKING THERAPY FOR BETTER WELLBEING

www.counsellingforfarmers.com

Tim Buckingham (MBACP)

ALL ENQUIRIES IN STRICTEST
CONFIDENCE

WANTED

Experienced night lamber
Approx 5th March for 3 weeks
Call Nick 07970037526

WE COVER SMALL FARMS, LARGE FARMS AND EVERYTHING IN BETWEEN



From sheep farmers to arable farmers.
Flower growers to poultry farmers.

NFU Mutual is proud to insure over 75% of UK farms with our Farm Select insurance. But we want more farms to benefit from great cover and local service. NFU Mutual has introduced Farm Essentials insurance - designed to meet the needs of smaller farms.

As your local agency, we are close by and can provide expert advice and hands-on support when you need it.

Call **Coventry Office** on **02476 444519**

NFU Mutual, 6 Eastwood Business Village,
Harry Weston Road, Binley Business Park,
Coventry, CV3 2UB



NFU Mutual
FARM INSURANCE

Trainee Agricultural Fitter

Immediate start

JMT Engineering (Ladbroke) Ltd has been established for 30 years. They sell, hire, maintain and service combines and other agricultural equipment from their Warwickshire base. In addition, they provide a spares service for wearing parts for combines.

Great opportunity for someone at the beginning of their career or someone who has experience in mechanical fitting. Trainee fitter needed to work alongside experienced fitters to repair and service combines, strip machinery for spares and help refurbish used machines to include cleaning, painting, and repairing as required. Work on site as part of a team or out at a customer's premises.

Join us on a full-time basis and you will receive a competitive hourly rate.

Experience required: Mechanical aptitude and a willingness to learn, preferably familiar with agricultural machinery. Need to solve problems efficiently and effectively. Need ability to work under pressure and demonstrate initiative. Must be flexible about working hours due to seasonal nature of work. Clean driving licence required due to rural location.

To apply please email jmtengineering@btconnect.com with a copy of your CV and a covering email to tell us why you would like to join our team.



Farm insurance, the way it should be

We're a family-run business and pride ourselves on forging long term relationships with our farming and agricultural clients. Covering the Midlands, South West and South East, we deliver an extensive range of farm, agri business and equine policies tailored to you.

www.county-insurance.co.uk/farms

Farm & Equine **01865 844985**

General **01865 842084**

 Follow us [@County_Farm](https://twitter.com/County_Farm)



County
Insurance Services

FINISHING CATTLE? GROWING CATTLE? FEEDING SHEEP?

**BERRYSTOCK
FEEDS**



**Do you want HIGH PERFORMANCE, COST EFFECTIVE, FULLY
ASSURED and COMPLETE FEEDS? Then contact BERRYSTOCK FEEDS:**

Tel: 01788 890320 E-Mail: john@berryfieldsfarm.co.uk Web: www.berrystockfeeds.co.uk
BERRYFIELDS FARM, DAVENTRY, NN11 8NP

T.A.R HIRE

- **FOR HIRE:**
- **10 & 14 TON REAR MUCK SPREADERS**
- **12 TON TRAILERS WITH SILAGE SIDES**
- **ROAD SWEEPER**
- **FLAT TRAILERS**
- **GRASS TOPPERS**
- **CONTRACT MUCK SPREADING SERVICES**

CONTACT:

DAVENTRY (ROB) - 07801791212

HINCKLEY (ALAN) - 07802951179



RFM

THE MIDLANDS MART

—RUGBYFARMERSMART.COM—

FORTHCOMING SALES

Thursday 21st January

Proposed Sale of TB Restricted Cattle

**Vendors who are wishing to sell stock
please feel free to contact:**

Tom Wrench - 07774 723758

Gareth Doyle- 07902 330623

John Eirian Davies- 07971202311

who will gladly make

A FREE ON FARM VISIT & VALUATION



Follow us on social media:

Facebook & Twitter - @RFMMidlandsMart

Instagram - rugbyfarmersmartltd